

EFAPEL[®]

ELECTRICAL SOLUTIONS

NEW



TRIPLE POWER



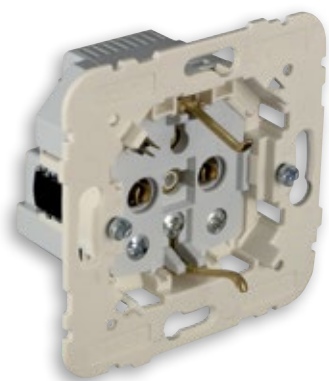
Schuko Earth Socket with USB A+C
for LOGUS90 Series



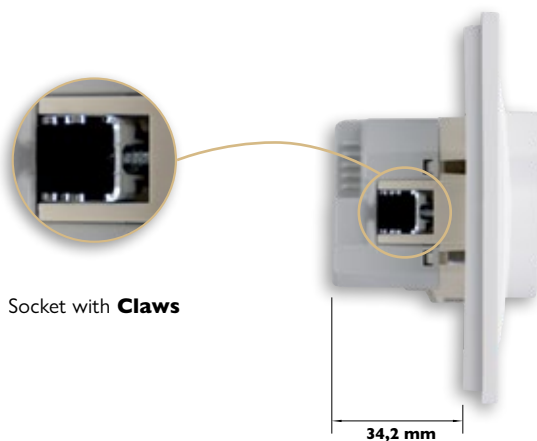
Schuko Earth Socket with USB A+C
for APOLO 5000 Series

The USB sockets, flexibly charge mobile devices without having to occupy the socket. Have two USB connections (type A and type C) and are the solution to **triple the power**.

THE IDEAL UPDATE



Schuko Earth Socket with USB
Ref. 21137



Socket with **Claws**

34,2 mm

Easy to renew, simple to replace, whether renovating a space or replacing a socket.

LOGUS⁹⁰



Ref. **90630 T**



FINISHINGS
LOGUS90

COLOR

BR	●	White
MF	●	Ivory
GE	●	Ice
PE	●	Pearl
AL	●	Aluminium
IS	●	Grey
PM	●	Matte Black
DU	●	Golden

APOLO 5000



Ref. **50630 T**



FINISHINGS
APOLO5000

COLOR

BR	●	White
MF	●	Ivory
PT	●	Black
BM	●	Matte White
PM	●	Matte Black
PR	●	Silver
GR	●	Graphite
CH	●	Champagne
PL	●	Platinum

TECHNICAL CHARACTERISTICS

Input voltage	250 V 50/60 Hz
Input maximum current	300 mA
Maximum load	16 A
USB Output	5 V[⎓] 3000 mA 15 W
Consumption	< 50 mW
Operating temperature	-5 °C – +40 °C

The different connections can be used simultaneously, with the load current being distributed between them.



efapel.com |    

Distributor:




Serpins,
3200-355 Serpins
PORTUGAL

EXPORT

 +351 239 970 135
 export@efapel.com

SAT - Technical Support Service

 +351 239 970 132
 sat@efapel.com



EFAPEL reserves the right to modify this document or the products contained herein without prior notice. Please contact EFAPEL if you have any questions.