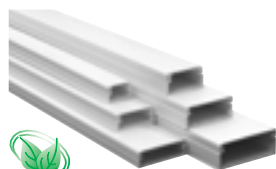


10 SERIES HALOGEN FREE - MINI CABLE (SELECTION GUIDE)



IP44

IK07



TRUNKINGS

Ref.

| Trunkings Characteristics | | | | Isolated Cables Capacity | | | | |
|---------------------------|----------|----------------------|-----------------------------|--------------------------|-----------------------------|--------------------|------------------|------------------|
| Internal Dim. | Length | Internal Section (S) | Available Section (Su) | ø Max. Available | Max. Nr. Conductors H07 V-U | | | |
| (mm) | (m) | (mm ²) | (S: 1,4) (mm ²) | (mm) | 1,5mm ² | 2,5mm ² | 4mm ² | 6mm ² |
| 18x10 | 2,10 (a) | 182,1 | 130 | 10 | 16 | 11 | 9 | 6 |
| 30x10 | 2,10 (a) | 310 | 221 | 10 | 28 | 18 | 15 | 11 |
| | | 145 | 104 | | | | | |
| 32x12,5 | 2,10 (a) | 145 | 104 | 10 | 13 | 9 | 7 | 5 |
| | | 145 | 104 | | | | | |
| 30x14 | 2,10 (a) | 401 | 286 | 14 | 36 | 25 | 20 | 15 |
| 38x9 | 2,10 (a) | 179 | 128 | 9 | 16 | 11 | 9 | 6 |
| | | 179 | 128 | | | | | |
| 38x14 | 2,10 (a) | 232 | 166 | 14 | 21 | 14 | 11 | 8 |
| | | 232 | 166 | | | | | |
| 47x17 | 2,10 (a) | 836 | 597 | 17 | 75 | 50 | 40 | 30 |

20x12,5

10030 HBR



32x12,5

10400 HBR



32x12,5

10410 HBR



32x16

10040 HBR



40x12,5

10050 HBR



40x16

10060 HBR



50x20

10500 HBR



10 SERIES HALOGEN FREE - MINI CABLE (SELECTION GUIDE)

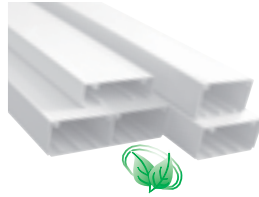


IP44

IK08

TRUNKINGS
(COVERS WITH 75MM WIDTH - L75)

Ref.



| | | Trunkings Characteristics | | | | Isolated Cables Capacity | | | | |
|---|--|---------------------------|--------|--------------------------------|--------------------------------|--------------------------|-----------------------------|--------------------|------------------|------------------|
| | | Internal Dim. | Length | Internal Section (S) | Available Section (Su) | ø Max. Available | Max. Nr. Conductors H07 V-U | | | |
| | | (mm) | (m) | (mm ²) | (S:1,4) (mm ²) | (mm) | 1,5mm ² | 2,5mm ² | 4mm ² | 6mm ² |
| 110x34 without Divider | | 106x31 | 2,00 | 3115,1 | 2225,1 | 28 | 283 | 192 | 154 | 115 |
| | | — | — | 1 896 2 1148 3 896 | 1 640 2 820 3 640 | 24 27 24 | 81 104 81 | 55 71 55 | 44 57 44 | 33 42 33 |
| 10080 HBR | | | | | | | | | | |
| 110x34 with 2 Dividers | | — | — | 1315,1 (b) | 969,4 | — | 119 | 81 | 65 | 48 |
| | | — | — | 1892,1 (b) | 1351,5 | — | 172 | 116 | 93 | 69 |
| 110x34 with Flush Mounting Box | | | | | | | | | | |
| 110x34 with Semi-Flush Mounting Box | | | | | | | | | | |
| 110x50 without Divider | | 106x47 | 2,00 | 4834,5 | 3453,2 | 43 | 434 | 294 | 235 | 176 |
| | | — | — | 1 2353,2 2 2353,2 | 1 1680,9 2 1680,9 | 41 41 | 214 210 | 145 142 | 116 114 | 86 85 |
| 110x50 with 1 Divider | | | | | | | | | | |
| 110x50 with 2 Dividers | | — | — | 1188,1 (b) | 2167,5 | — | 270 | 183 | 146 | 109 |
| | | — | — | 3034,5 (b) | 2167,5 | — | 270 | 183 | 146 | 109 |
| 10090 HBR | | | | | | | | | | |
| 110x50 with Flush Mounting Box | | — | — | 3611,5 (b) | 2579,6 | — | 322 | 219 | 175 | 130 |
| | | — | — | 1 1188,1 2 2202 3 1188,1 | 1 848,6 2 1572,9 3 848,6 | 31 38 31 | 126 161 126 | 86 109 86 | 69 87 69 | 51 65 51 |
| 110x50 with Semi-Flush Mounting Box | | | | | | | | | | |

10 SERIES HALOGEN FREE - MINI CABLE (SELECTION GUIDE)

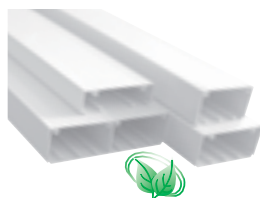


IP44

IK08

TRUNKINGS
(COVERS WITH 75MM WIDTH - L75)

Ref.



| Trunkings Characteristics | | | |
|---------------------------|--------|------------------------------|--------------------------------|
| Internal Dim. | Length | Internal Section (S) | Available Section (Su) |
| (mm) | (m) | (mm ²) | (S: 1,4) (mm ²) |
| 86x47 | 2,00 | 3909,3 | 2792,4 |
| — | — | 1 1890,6 2 1890,6 | 1 1350,4 2 1350,4 |
| — | — | 1 725,6 2 2202 3 725,6 | 1 518,3 2 1572,9 3 518,3 |
| — | — | 2109,3 (b) | 1506,6 |
| — | — | 2686,3 (b) | 1918,8 |
| 87x47 87x47 | 2,00 | 1 3960,9 | 1 2829,2 |
| — | — | 1 1946,9 2 1885,9 | 1 1390,6 2 1347,1 |
| — | — | 1 781,9 2 2202 3 720,8 | 1 558,5 2 1572,9 3 514,9 |
| — | — | 1 2160,9 (b) | 1 1543,5 |
| — | — | 1 2737,9 (b) | 1 1955,6 |

| Isolated Cables Capacity | | | | |
|--------------------------|-----------------------------|--------------------|------------------|------------------|
| ø Max. Available | Max. Nr. Conductors H07 V-U | | | |
| | 1,5mm ² | 2,5mm ² | 4mm ² | 6mm ² |
| 45 | 349 | 233 | 186 | 140 |
| 40 40 | 169 169 | 113 113 | 90 90 | 68 68 |
| 25 30 25 | 65 197 65 | 43 131 43 | 35 105 35 | 26 79 26 |
| — | 188 | 126 | 100 | 75 |
| — | 240 | 160 | 128 | 96 |
| 45 | 354 | 236 | 189 | 141 |
| 45 45 | 174 168 | 116 112 | 93 90 | 70 67 |
| 45 45 45 | 70 197 64 | 47 131 43 | 37 105 34 | 28 79 26 |
| — | 193 | 129 | 103 | 77 |
| — | 244 | 163 | 130 | 98 |

| | | |
|--|-----------|--|
| 90x50 without Divider | | |
| 90x50 with 1 Divider | | |
| 90x50 with 2 Dividers | 10180 HBR | |
| 90x50 with Flush Mounting Box | | |
| 90x50 with Semi-Flush Mounting Box | | |
| 180x50 without Divider | | |
| 180x50 with 1 Divider | | |
| 180x50 with 2 Dividers | 10290 HBR | |
| 180x50 with Flush Mounting Box | | |
| 180x50 with Semi-Flush Mounting Box | | |



10 SERIES - MINI CABLE TRUNKINGS (SELECTION GUIDE)



IP44

IK07



| TRUNKINGS | Ref. | |
|----------------------------------|-----------|--|
| 12x7 (IK05) | 10010 CBR | |
| 12x7 Adhesive Trunking (IK05) | 10010 FBR | |
| 16x10 | 10020 CBR | |
| 16x10 Adhesive Trunking | 10020 FBR | |
| 20x12,5 | 10030 CBR | |
| 20x12,5 Adhesive Trunking | 10030 FBR | |
| 32x12,5 without Divider | 10400 CBR | |
| 32x12,5 Adhesive without Divider | 10400 FBR | |
| 32x12,5 | 10410 CBR | |
| 32x12,5 Adhesive Trunking | 10410 FBR | |
| 32x16 | 10040 CBR | |
| 32x16 Adhesive Trunking | 10040 FBR | |
| 40x12,5 | 10050 CBR | |
| 40x12,5 Adhesive Trunking | 10050 FBR | |
| 40x12,5 without Divider | 10150 CBR | |
| 40x12,5 Adhesive without Divider | 10150 FBR | |
| 40x16 | 10060 CBR | |
| 40x16 Adhesive Trunking | 10060 FBR | |
| 40x16 without Divider | 10160 CBR | |
| 40x16 Adhesive without Divider | 10160 FBR | |
| 50x20 | 10500 CBR | |
| 50x20 with 1 Divider | 10510 CBR | |
| 50x20 with 2 Dividers | 10520 CBR | |
| 60x16 | 10070 CBR | |
| 60x16 without Divider | 10070 CBR | |
| 75x20 | 10140 CBR | |

| Trunkings Characteristics | | | |
|---------------------------|----------|-------------------------|----------------------------|
| Internal Dim. | Length | Internal Section (S) | Available Section (Su) |
| (mm) | (m) | (mm ²) | (S:1,4) (mm ²) |
| 10x5 | 2,10 (a) | 61,2 | 44 |
| 14x8 | 2,10 (a) | 121 | 86 |
| 18x10 | 2,10 (a) | 182,1 | 130 |
| 30x10 | 2,10 (a) | 310 | 221 |
| | | 1 145 2 145 | 104 104 |
| 30x14 | 2,10 (a) | 401 | 286 |
| 38x9 | 2,10 (a) | 1 179 2 179 | 128 128 |
| | | 394,8 | 282 |
| 38x14 | 2,10 (a) | 1 232 2 232 | 166 166 |
| | | 514,7 | 368 |
| 47x17 | 2,10 (a) | 836 | 597 |
| | | 1 553 2 256 | 395 183 |
| | | 1 256 2 270 3 256 | 183 193 183 |
| 57x14 | 2,10 (a) | 1 228 2 246 3 228 | 163 176 163 |
| | | 787,9 | 563 |
| 72x18 | 2,10 (a) | 1 325 2 463 3 325 | 232 331 232 |

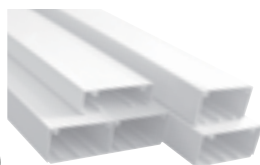
| Isolated Cables Capacity | | | | |
|--------------------------|-----------------------------|--------------------|--------------------|------------------|
| ø Max. Available | Max. Nr. Conductors H07 V-U | | | |
| | (mm) | 1,5mm ² | 2,5mm ² | 4mm ² |
| 5 | 5 | 4 | 3 | 2 |
| 8 | 11 | 7 | 6 | 4 |
| 10 | 16 | 11 | 9 | 6 |
| 10 | 28 | 18 | 15 | 11 |
| 10 | 13 13 | 9 9 | 7 7 | 5 5 |
| 14 | 36 | 25 | 20 | 15 |
| 9 9 | 16 16 | 11 11 | 9 9 | 6 6 |
| 9 | 36 | 24 | 19 | 14 |
| 14 14 | 21 21 | 14 14 | 11 11 | 8 8 |
| 14 | 47 | 32 | 25 | 19 |
| 17 | 75 | 50 | 40 | 30 |
| 17 | 49 23 | 33 15 | 26 12 | 20 9 |
| 17 | 23 24 23 | 15 16 15 | 12 13 12 | 9 10 9 |
| 14 14 14 | 20 22 20 | 14 15 14 | 11 12 11 | 8 9 8 |
| 14 | 72 | 48 | 39 | 29 |
| 17 17 17 | 29 42 29 | 20 28 20 | 16 23 16 | 12 17 12 |

10 SERIES - DISTRIBUTION CABLE TRUNKINGS (SELECTION GUIDE)



IP44

IK08



TRUNKINGS

(COVERS WITH 75MM WIDTH 75MM - L75)

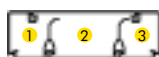
Ref.

| Trunkings Characteristics | | | | Isolated Cables Capacity | | | | |
|---------------------------|--------|--------------------------------|--------------------------------|--------------------------|-----------------------------|--------------------|------------------|------------------|
| Internal Dim. | Length | Internal Section (S) | Available Section (Su) | ∅ Max. Available | Max. Nr. Conductors H07 V-U | | | |
| (mm) | (m) | (mm ²) | (S:1,4) (mm ²) | (mm) | 1,5mm ² | 2,5mm ² | 4mm ² | 6mm ² |
| 106x31 | 2,00 | 3115,1 | 2225,1 | 28 | 283 | 192 | 154 | 115 |
| — | — | ① 896 ② 1148 ③ 896 | ① 640 ② 820 ③ 640 | 24 27 24 | 81 104 81 | 55 71 55 | 44 57 44 | 33 42 33 |
| 10080 RBR | — | 1315,1 (b) | 969,4 | — | 119 | 81 | 65 | 48 |
| — | — | 1892,1 (b) | 1351,5 | — | 172 | 116 | 93 | 69 |
| 106x47 | 2,00 | 4834,5 | 3453,2 | 43 | 434 | 294 | 235 | 176 |
| — | — | ① 2353,2 ② 2353,2 | ① 1680,9 ② 1680,9 | 41 41 | 214 210 | 145 142 | 116 114 | 86 85 |
| 10090 RBR | — | ① 1188,1 ② 2202 ③ 1188,1 | ① 848,6 ② 1572,9 ③ 848,6 | 31 38 31 | 126 161 126 | 86 109 86 | 69 87 69 | 51 65 51 |
| — | — | 3034,5 (b) | 2167,5 | — | 270 | 183 | 146 | 109 |
| — | — | 3611,5 (b) | 2579,6 | — | 322 | 219 | 175 | 130 |

110x34
without Divider



110x34
with 2 Dividers



10080 RBR

110x34
with
Flush Mounting Box



110x34
with
Semi-Flush Mounting
Box



110x50
without Divider



110x50
with 1 Divider



110x50
with 2 Dividers

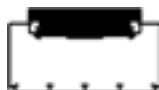
10090 RBR



110x50
with
Flush Mounting Box



110x50
with
Semi-Flush Mounting
Box

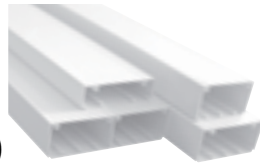


10 SERIES - DISTRIBUTION CABLE TRUNKINGS (SELECTION GUIDE)



IP44

IK08



TRUNKINGS
(COVERS WITH 75MM WIDTH 75MM - L75)

Ref.

| | | Trunkings Characteristics | | | | Isolated Cables Capacity | | | | |
|---|-----------|---------------------------|---------------|--|--|--------------------------|-----------------------------|------------------|------------------|----------------|
| | | Internal Dim. (mm) | Length (m) | Internal Section (S) (mm ²) | Available Section (Su) (S: 1,4) (mm ²) | ø Max. Available (mm) | Max. Nr. Conductors H07 V-U | | | |
| | | | | | | 1,5mm ² | 2,5mm ² | 4mm ² | 6mm ² | |
| 90x50 without Divider | | 86x47 | 2,00 | 3909,3 | 2792,4 | 45 | 349 | 233 | 186 | 140 |
| 90x50 with 1 Divider | | — | — | 1 1890,6 2 1890,6 | 1 1350,4 2 1350,4 | 40 40 | 169 169 | 113 113 | 90 90 | 68 68 |
| 90x50 with 2 Dividers | 10180 RBR | — | — | 1 725,6 2 2202 3 725,6 | 1 518,3 2 1572,9 3 518,3 | 25 30 25 | 65 197 65 | 43 131 43 | 35 105 35 | 26 79 26 |
| 90x50 with Flush Mounting Box | | — | — | 2109,3 (b) | 1506,6 | — | 188 | 126 | 100 | 75 |
| 90x50 with Semi-Flush Mounting Box | | — | — | 2686,3 (b) | 1918,8 | — | 240 | 160 | 128 | 96 |
| 180x50 without Divider | | 87x47 87x47 | 2,00 | 1 3960,9 | 1 2829,2 | 45 | 354 | 236 | 189 | 141 |
| 180x50 with 1 Divider | | — | — | 1 1946,9 2 1885,9 | 1 1390,6 2 1347,1 | 45 45 | 174 168 | 116 112 | 93 90 | 70 67 |
| 180x50 with 2 Dividers | 10290 RBR | — | — | 1 781,9 2 2202 3 720,8 | 1 558,5 2 1572,9 3 514,9 | 45 45 45 | 70 197 64 | 47 131 43 | 37 105 34 | 28 79 26 |
| 180x50 with Flush Mounting Box | | — | — | 1 2160,9 (b) | 1 1543,5 | — | 193 | 129 | 103 | 77 |
| 180x50 with Semi-Flush Mounting Box | | — | — | 1 2737,9 (b) | 1 1955,6 | — | 244 | 163 | 130 | 98 |

10 SERIES - SKIRT CABLE TRUNKINGS (SELECTION GUIDE)



IP44



TRUNKINGS

Ref.

| Trunkings Characteristics | | | |
|---------------------------|--------|----------------------|----------------------------|
| Internal Dim. | Length | Internal Section (S) | Available Section (Su) |
| (mm) | (m) | (mm ²) | (S:1,4) (mm ²) |
| 104x17 | 2,00 | 1 330,7 | 236 |
| | | 2 420,7 | 301 |
| | | 3 436,9 | 312 |

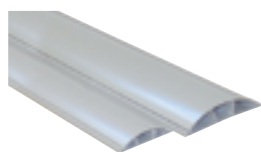
| Isolated Cables Capacity | | | | |
|--------------------------|-----------------------------|--------------------|--------------------|------------------|
| ø Max. Available | Max. Nr. Conductors H07 V-U | | | |
| | (mm) | 1,5mm ² | 2,5mm ² | 4mm ² |
| 14 | 30 | 20 | 16 | 12 |
| 16 | 38 | 26 | 21 | 15 |
| 17 | 40 | 27 | 21 | 16 |

110x20
(IK05)

10100 CBR



10 SERIES - FLOOR CABLE TRUNKINGS (SELECTION GUIDE)



TRUNKINGS

Ref.

| Trunkings Characteristics | | | |
|---------------------------|--------|----------------------|----------------------------|
| Internal Dim. | Length | Internal Section (S) | Available Section (Su) |
| (mm) | (m) | (mm ²) | (S:1,4) (mm ²) |
| 50x12 | 2,00 | 1 47 | 34 |
| | | 2 148 | 106 |
| | | 3 47 | 34 |
| 75x17 | 2,00 | 1 198,8 | 142 |
| | | 2 238,5 | 170 |
| | | 3 198,8 | 142 |

| Isolated Cables Capacity | | | | |
|--------------------------|-----------------------------|--------------------|--------------------|------------------|
| ø Max. Available | Max. Nr. Conductors H07 V-U | | | |
| | (mm) | 1,5mm ² | 2,5mm ² | 4mm ² |
| 6 | 4 | 3 | 2 | 1 |
| 9 | 13 | 9 | 7 | 5 |
| 6 | 4 | 3 | 2 | 1 |
| 11 | 18 | 12 | 10 | 7 |
| 14 | 21 | 14 | 11 | 8 |
| 11 | 18 | 12 | 10 | 7 |

50x12

10110 CCZ



75x17

10120 CCZ



13 SERIES - TRUNKINGS FOR PROTECTION OF CABLES AND PIPES (SELECTION GUIDE)



IP44

IK08



TRUNKINGS

Ref.

| Trunkings Characteristics | | | |
|---------------------------|--------|----------------------|----------------------------|
| Internal Dim. | Length | Internal Section (S) | Available Section (Su) |
| (mm) | (m) | (mm ²) | (S:1,4) (mm ²) |
| 25x30 | 2,00 | 530,0 | 379 |
| 40x40 | 2,00 | 1280,6 | 915 |
| 60x40 | 2,00 | 1973,7 | 1410 |
| 60x60 | 2,00 | 3101,7 | 2216 |
| 80x40 | 2,00 | 2668,0 | 1906 |
| 80x60 | 2,00 | 4192,0 | 2994 |
| 100x40 | 2,00 | 3352,3 | 2395 |
| 100x60 | 2,00 | 5272,3 | 3766 |

| Cables, Pipes and Conductors Capacity | | | | |
|---------------------------------------|-----------------------------|--------------------|--------------------|------------------|
| ø Max. Available | Max. Nr. Conductors H07 V-U | | | |
| | (mm) | 1,5mm ² | 2,5mm ² | 4mm ² |
| 20 | 48 | 32 | 26 | 19 |
| 35 | 116 | 79 | 63 | 47 |
| 35 | 180 | 122 | 97 | 73 |
| 55 | 282 | 191 | 153 | 114 |
| 35 | 243 | 164 | 132 | 98 |
| 55 | 382 | 259 | 207 | 154 |
| 35 | 305 | 207 | 166 | 123 |
| 55 | 480 | 325 | 260 | 194 |

25x30

13010 CBR



40x40

13020 CBR



60x40

13030 CBR



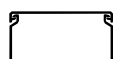
60x60

13040 CBR



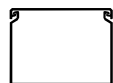
80x40

13050 CBR



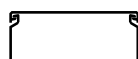
80x60

13060 CBR



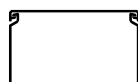
100x40

13070 CBR



100x60

13080 CBR

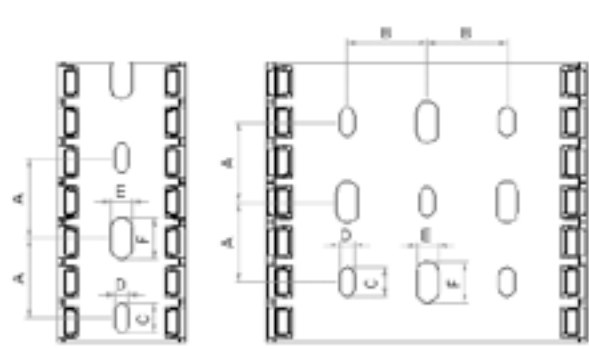


14 SERIES - TRUNKINGS FOR PANELBOARDS (SELECTION GUIDE)

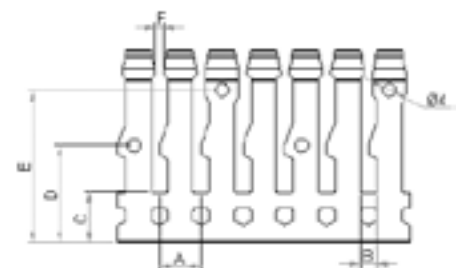


| TRUNKINGS | Ref. | | Trunkings Characteristics | | | | Cables, Pipes and Conductors Capacity | | | | |
|-----------|-----------|--|---------------------------|--------|----------------------|----------------------------|---------------------------------------|-----------------------------|--------------------|--------------------|------------------|
| | | | Internal Dim. | Length | Internal Section (S) | Available Section (Su) | ø Max. Available | Max. Nr. Conductors H07 V-U | | | |
| | | | (mm) | (m) | (mm ²) | (S:1,4) (mm ²) | | (mm) | 1,5mm ² | 2,5mm ² | 4mm ² |
| 25x30 | 14010 CCZ | | 22x27 | 2,00 | 530,0 | 379 | 20 | 48 | 32 | 26 | 19 |
| 25x60 | 14090 CCZ | | 22x56 | 2,00 | 1099 | 785 | 20 | 98 | 65 | 52 | 39 |
| 40x40 | 14020 CCZ | | 37x37 | 2,00 | 1280,6 | 915 | 35 | 116 | 79 | 63 | 47 |
| 60x40 | 14030 CCZ | | 56x37 | 2,00 | 1973,7 | 1410 | 35 | 180 | 122 | 97 | 73 |
| 60x60 | 14040 CCZ | | 56x56 | 2,00 | 3101,7 | 2216 | 55 | 282 | 191 | 153 | 114 |
| 80x40 | 14050 CCZ | | 73x36 | 2,00 | 2668,0 | 1906 | 35 | 243 | 164 | 132 | 98 |
| 80x60 | 14060 CCZ | | 76x56 | 2,00 | 4192,0 | 2994 | 55 | 382 | 259 | 207 | 154 |
| 100x40 | 14070 CCZ | | 96x36 | 2,00 | 3352,3 | 2395 | 35 | 305 | 207 | 166 | 123 |
| 100x60 | 14080 CCZ | | 96x56 | 2,00 | 5272,3 | 3766 | 55 | 480 | 325 | 260 | 194 |

| Base Perforation (mm) | | | | | | | | | | | | | |
|-----------------------|----|----|---|---|-----|----|-----|----|---|---|-----|----|-----|
| L | H | A | B | C | D | E | F | | | | | | |
| 25 | 30 | 25 | — | 9 | 4,5 | 13 | 6,5 | | | | | | |
| | 60 | | | | | | | | | | | | |
| 40 | 40 | | | | | | | | | | | | |
| | 60 | | | | | | | | | | | | |
| 60 | 40 | | | | | | | 25 | — | 9 | 4,5 | 13 | 6,5 |
| | 60 | | | | | | | | | | | | |
| 80 | 40 | | | | | | | | | | | | |
| | 60 | | | | | | | | | | | | |
| 100 | 40 | | | | | | | | | | | | |
| | 60 | | | | | | | | | | | | |



| Lateral Perforation (mm) | | | | | | | |
|--------------------------|----|-----|---|------|----|----|-----|
| L | H | A | B | C | D | E | F |
| 25 | 30 | 125 | 5 | 10,5 | 17 | — | 2,5 |
| | 60 | | | 15 | 29 | 45 | |
| 40 | 40 | | | 11,5 | 20 | — | |
| | 60 | | | 15 | 29 | 45 | |
| 60 | 40 | | | 12 | 20 | — | |
| | 60 | | | 15 | 29 | 45 | |
| 80 | 40 | | | 12 | 20 | — | |
| | 60 | | | 15 | 29 | 45 | |
| 100 | 40 | | | 12 | 20 | — | |
| | 60 | | | 15 | 29 | 45 | |



TABLES OF CABLES | CRITERIA FOR CABLE TRUNKINGS SELECTION

TABLE OF CABLES

■ Energy Cables

Diameter and Section Table of some common cables.
(The dimensions may vary according to the manufacturer)

■ Data and Telephone Cables

Diameter and Section Table of some common data cables, UTP, STP, FTP and Coaxial type.
(The dimensions may vary according to the manufacturer)

| TYPE OF CABLE | NOMINAL SECTION (mm) | DIAMETER (mm) | SECTION (mm ²) | TYPE OF CABLE | DIAMETER (mm) | SECTION (mm ²) |
|---------------|----------------------|---------------|----------------------------|---------------------------|---------------|----------------------------|
| H05 VV-F | 2x0,75 | 7,6 | 58 | 4 Pairs UTP Cat. 5e Cable | 6,2 | 37,5 |
| H05 VV-F | 2x1 | 8,0 | 64 | 4 Pairs FTP Cat. 5e Cable | 6,9 | 47,2 |
| H05 VV-F | 2x1,5 | 9,0 | 81 | 4 Pairs UTP Cat. 6 Cable | 7,6 | 57 |
| H05 VV-F | 2x2,5 | 11,0 | 121 | 4 Pairs FTP Cat. 6 Cable | 8,3 | 68 |
| H05 VV-F | 3 G 0,75 | 8,0 | 64 | RG 59 Coaxial Cable | 6,2 | 38,4 |
| H05 VV-F | 3 G 1 | 8,4 | 71 | RG 58 Coaxial Cable | 5 | 25 |
| H05 VV-F | 3 G 1,5 | 9,8 | 96 | RG 11 Coaxial Cable | 10,5 | 110,3 |
| H05 VV-F | 3 G 2,5 | 12,0 | 144 | RG 8 Coaxial Cable | 10,3 | 106,1 |
| H07 V-U | 1x1,5 | 2,8 | 7,84 | RG 7 Coaxial Cable | 8,1 | 65,6 |
| H07 V-U | 1x2,5 | 3,4 | 11,56 | RG 6 Coaxial Cable | 7 | 49 |
| H07 V-U | 1x4 | 3,8 | 14,44 | TVHV 1x2x0,5 Cable | 4,3 | 18,5 |
| H07 V-U | 1x6 | 4,4 | 19,36 | TVHV 2x2x0,5 Cable | 5,0 | 25 |
| H07 V-K | 1x1,5 | 3,5 | 12 | TVHV 3x2x0,5 Cable | 5,7 | 32,5 |
| H07 V-K | 1x2,5 | 4,2 | 18 | TVHV 6x2x0,5 Cable | 6,5 | 42,3 |
| H07 V-K | 1x4 | 4,8 | 23 | TVHV 10x2x0,5 Cable | 7,8 | 60,8 |
| H07 V-K | 1x6 | 6,3 | 40 | TVHV 15x2x0,5 Cable | 8,7 | 75,7 |
| H07 V-K | 1x10 | 7,6 | 58 | TVHV 20x2x0,5 Cable | 9,7 | 94,1 |
| VV-0,6/1 KV | 3x16+10 | 20,7 | 428 | TVHV 30x2x0,5 Cable | 12,0 | 144 |
| VV-0,6/1 KV | 3x25+16 | 23,0 | 529 | TVHV 40x2x0,5 Cable | 13,5 | 182,3 |
| VV-0,6/1 KV | 3x35+16 | 25,0 | 625 | TVHV 50x2x0,5 Cable | 15,0 | 225 |
| VV-0,6/1 KV | 4 G 1,5 | 11,4 | 130 | TVHV 100x2x0,5 Cable | 20,0 | 400 |

CRITERIA FOR CABLE TRUNKINGS SELECTION

Examples for common installations:

Cables to be installed

| TYPE OF CABLE | QUANTITY (Q) | NOMINAL SECTION (S) | OUTSIDE DIAMETER (D) (mm) | UNITARY SECTION (SU) (SU= DxD) | TOTAL SECTION (ST) (mm ²) (SUxQ) |
|--|--------------|---------------------|---------------------------|--------------------------------|--|
| H07 V-U | 20 | 1x4 | 3,8 | 14,44 | 288,8 |
| H07 V-U | 15 | 1x6 | 4,4 | 19,36 | 290,4 |
| H07 V-U | 10 | 1x2,5 | 3,4 | 11,56 | 115,6 |
| H07 V-U | 10 | 1x4 | 3,8 | 14,44 | 144,4 |
| Cable Total Section (St) | | | | | 839,2mm² |
| Minimum Trunkings Section = Cables Total Section (St) x K = 839,2 x 1,4 = | | | | | 1174,88mm² |

Typical K values to ensure better ventilation, crossings and possible expansions:

K = Filling Coefficient

K = 1,4 for Low Voltage, Power Cable

K = 1,3 for Data and Telephone Cables

K = 1,2 for Tubes

It is possible to choose one of the following EFAPEL's cable trunkings:

| CABLE TRUNKINGS | | | |
|-----------------|--------------|-------------------------------------|--------------------------------------|
| Ref. | DESCRIPTION | INTERNAL SECTION (mm ²) | AVAILABLE SECTION (mm ²) |
| 10080 RBR | Calha 110x34 | 3115,1 | 2225,1 |
| 13030 CBR | Calha 60x40 | 1973,7 | 1410 |
| 16020 CBR | Calha 90x50 | 3956 | 2826 |



10 Serie - CABLE TRUNKINGS FOR ELECTRICAL AND TELECOMMUNICATIONS INSTALLATIONS

| SECTION 6 | CLASSIFICATION | MINI CABLE TRUNKINGS SKIRT CABLE TRUNKINGS | DISTRIBUTION CABLE TRUNKINGS |
|-----------|--|---|--|
| 6.2 | Resistance to impact for installation and application | 12x7 | 0,5 J |
| | | 110x20 | 1 J |
| | | 16x10 / 20x12,5 / 32x12,5 / 32x16 / 40x12,5 / 40x16 / 50x20 / 60x16 / 75x20 | 2 J |
| 6.3 | Minimum Storage and Transport Temperature | -25°C | -45°C |
| 6.3 | Minimum Installation and Application Temperature | -5°C | -25°C |
| 6.3 | Maximum Application Temperature | 60°C | 60°C |
| 6.4 | Resistance to flame propagation | Non-flame propagating | |
| 6.5 | Electrical continuity characteristic | Without electrical continuity | |
| 6.6 | Electrical insulation | With electrical insulation | |
| 6.7 | Protection degree provided by enclosure | IP44 | |
| 6.8 | Protection against corrosive or polluting substances | Medium protection outside and inside | |
| 6.9 | Access system to the retention of the cover | The cover can only be removed with a tool | |
| 6.10 | Electrical protective separation | With and without electrical protective partition (divider) | |
| 6.101 | Intended installation positions | Surface mounted fixed on the wall or on the ceiling | |
| 6.102 | Prevention of contact between liquids and insulated conductors and live parts in case of mounted in a skirting position and on wet floor | Not declared | |
| 6.103 | Type | 3 (installation) | |
| | Glow Wire Test | — | 1000°C |
| | Rated Voltage | 500V~ | 1000V~ |
| | IEC 60884-1 – NP 1260 Fixation of Low Voltage Devices - Test of Resistance to Extraction | — | Declared Extraction Force: 90N 1,5x90 = 135N |

ASTM G-53 STANDARD

UV Resistance

| ACCELERATED AGING CHAMBER TESTS | RESISTANCE |
|---------------------------------|-----------------------|
| Test UV | 80h - without changes |
| Condensation Test | 40h - without changes |



RoHS - All the Cable Trunkings and the respective Accessories manufactured by EFAPEL fulfil the specifications of the RoHS 2011/65/UE Directive that restricts the use of certain hazardous substances like lead, mercury, cadmium, hexavalent chromium, polybrominated biphenyls (PBB) and polybrominated diphenyl ether (PBDE).

10 Serie - CABLE TRUNKINGS HALOGEN FREE FOR ELECTRICAL AND TELECOMMUNICATIONS INSTALLATIONS

| SECTION 6 | CLASSIFICATION | MINI CABLE TRUNKINGS | DISTRIBUTION CABLE TRUNKINGS |
|-----------|--|--|---|
| 6.2 | Resistance to impact for installation and application | 20x12,5 / 32x12,5 / 32x16 / 40x12,5 / 40x16 / 50x20 | 2 J Cable Trunkings and Accessories: 2 J Trunkings: 5 J |
| 6.3 | Minimum Storage and Transport Temperature | -25°C | -45°C |
| 6.3 | Minimum Installation and Application Temperature | -5°C | -25°C |
| 6.3 | Maximum Application Temperature | 60°C | 60°C |
| 6.4 | Resistance to flame propagation | Non-flame propagating | |
| 6.5 | Electrical continuity characteristic | Without electrical continuity | |
| 6.6 | Electrical insulation | With electrical insulation | |
| 6.7 | Protection degree provided by enclosure | IP44 | |
| 6.8 | Protection against corrosive or polluting substances | Medium protection outside and inside | |
| 6.9 | Access system to the retention of the cover | The cover can only be removed with a tool | |
| 6.10 | Electrical protective separation | With and without electrical protective partition (divider) | |
| 6.101 | Intended installation positions | Surface mounted fixed on the wall or on the ceiling | |
| 6.102 | Prevention of contact between liquids and insulated conductors and live parts in case of mounted in a skirting position and on wet floor | Not declared | |
| 6.103 | Type | 3 (installation) | |
| | Glow Wire Test | — | 1000°C |
| | Rated Voltage | 500V~ | 1000V~ |
| | IEC 60884-1 – NP 1260 Fixation of Low Voltage Devices - Test of Resistance to Extraction | — | Força de extração declarada: 90N 1,5x90 = 135N |

ASTM G-53 STANDARD

UV Resistance

| ACCELERATED AGING CHAMBER TESTS | RESISTANCE |
|---------------------------------|-----------------------|
| Test UV | 80h - without changes |
| Condensation Test | 40h - without changes |



RoHS - All the Cable Trunkings and the respective Accessories manufactured by EFAPEL fulfil the specifications of the RoHS 2011/65/UE Directive that restricts the use of certain hazardous substances like lead, mercury, cadmium, hexavalent chromium, polybrominated biphenyls (PBB) and polybrominated diphenyl ether (PBDE).



CLASSIFICATION - EN 50085-2-2 STANDARD

10 Serie - FLOOR CABLE TRUNKINGS

| SECTION 6 | CLASSIFICATION | FLOOR CABLE TRUNKINGS |
|-----------|--|--|
| 6.2 | Resistance to impact for installation and application | 2 J |
| 6.3 | Minimum Storage and Transport Temperature | -25°C |
| 6.3 | Minimum Installation and Application Temperature | -5°C |
| 6.3 | Maximum Application Temperature | 60°C |
| 6.4 | Resistance to flame propagation | Non-flame propagating |
| 6.5 | Electrical continuity characteristic | Without electrical continuity |
| 6.6 | Electrical insulation | Without electrical insulation |
| 6.7 | Protection degree provided by enclosure | IP44 |
| 6.8 | Protection against corrosive or polluting substances | Medium protection outside and inside |
| 6.9 | Access system to the retention of the cover | The cover can only be removed with a tool |
| 6.10 | Electrical protective separation | With electrical protective partition (divider) |
| 6.101.3 | Floor treatment | CTS/CDS for wet-treatment of floor when the service unit is in use |
| 6.102 | Resistance to vertical load applied through small surface area | 500N |
| 6.103 | Resistance to vertical load applied through large surface area | 2000N |

ASTM G-53 STANDARD

UV Resistant

| ACCELERATED AGING CHAMBER TESTS | RESISTANCE |
|---------------------------------|---------------------------------|
| UV Test | 80h - without undergoing change |
| Condensation test | 40h - without undergoing change |



RoHS - All the Cable Trunkings and the respective Accessories manufactured by EFAPEL fulfil the specifications of the RoHS 2011/65/UE Directive that restricts the use of certain hazardous substances like lead, mercury, cadmium, hexavalent chromium, polybrominated biphenyls (PBB) and polybrominated diphenyl ether (PBDE).

CLASSIFICATION - EN 50085-2-1 STANDARD

13 SERIES - TRUNKINGS FOR PROTECTION OF CABLES AND PIPES

| SECTION 6 | CLASSIFICATION | TRUNKINGS FOR PROTECTION OF CABLES AND PIPES | |
|-----------|---|---|------------|
| | | With Accessory | Trunking |
| 6.2 | Resistance to impact for installation and application | 2 J | 5 J |
| 6.3 | Minimum Storage and Transport Temperature | -25°C | |
| 6.3 | Minimum Installation and Application Temperature | -5°C | |
| 6.3 | Maximum Application Temperature | 60°C | |
| 6.4 | Resistance to flame propagation | Non-flame propagating | |
| 6.5 | Electrical continuity characteristic | Without electrical continuity | |
| 6.6 | Electrical insulation | With electrical insulation | |
| 6.7 | Protection degree provided by enclosure | IP44 | |
| 6.8 | Protection against corrosive or polluting substances | Medium protection outside and inside | |
| 6.9 | Access system to the retention of the cover | The cover can only be removed with a tool | |
| 6.10 | Electrical protective separation | Without electrical protective partition (divider) | |
| 6.101 | Intended installation positions | Surface mounted fixed on the wall or on the ceiling | |
| 6.102 | Prevention of contact between liquids and insulated conductors and live parts in case of mounted in a skirting position and on wet floor. | Not declared | |
| 6.103 | Type | 2 (distribution) | |
| | Rated Voltage | 500V~ | |

ASTM G-53 STANDARD

UV Resistant

| ACCELERATED AGING CHAMBER TESTS | RESISTANCE |
|---------------------------------|---------------------------------|
| UV Test | 80h - without undergoing change |
| Condensation test | 40h - without undergoing change |



RoHS - All the Cable Trunkings and the respective Accessories manufactured by EFAPEL fulfil the specifications of the RoHS 2011/65/UE Directive that restricts the use of certain hazardous substances like lead, mercury, cadmium, hexavalent chromium, polybrominated biphenyls (PBB) and polybrominated diphenyl ether (PBDE).



10 Series - CABLE TRUNKINGS FOR ELECTRICAL AND TELECOMMUNICATIONS INSTALLATIONS

| Ref. | OUTSIDE DIMENSIONS (mm) | PROTECTION AGAINST EXTERNAL MECHANICAL SHOCKS - IK | |
|-------------------------------------|-------------------------|--|--------------------|
| MINI CABLE TRUNKINGS | | TRUNKINGS | ACCESSORIES |
| 10010 | 12x7 | IK05 | IK05 |
| 10020 | 16x10 | IK07 | IK07 |
| 10030 | 20x12,5 | | |
| 10400 10410 | 32x12,5 | | |
| 10040 | 32x16 | | |
| 10050 10150 | 40x12,5 | | |
| 10060 10160 | 40x16 | | |
| 10500 10510 10520 | 50x20 | | |
| 10070 10170 | 60x16 | | |
| 10140 | 75x20 | | |
| SKIRT CABLE TRUNKINGS | | TRUNKINGS | ACCESSORIES |
| 10100 | 110x20 | IK05 | IK05 |
| FLOOR CABLE TRUNKINGS | | TRUNKINGS | ACCESSORIES |
| 10110 | 50x12 | IK07 | IK06 |
| 10120 | 75x17 | | |
| DISTRIBUTION CABLE TRUNKINGS | | TRUNKINGS | ACCESSORIES |
| 10080 | 110x34 | IK09 | IK08 |
| 10090 | 110x50 | | |
| 10180 | 90x50 | | |
| 10290 | 180x50 | | |

10 Series - HALOGEN FREE CABLE TRUNKINGS FOR ELECTRICAL AND TELECOMMUNICATIONS INSTALLATIONS

| Ref. | OUTSIDE DIMENSIONS (mm) | PROTECTION AGAINST EXTERNAL MECHANICAL SHOCKS - IK | |
|-------------------------------------|-------------------------|--|--------------------|
| MINI CABLE TRUNKINGS | | TRUNKINGS | ACCESSORIES |
| 10030 | 20x12,5 | IK08 | IK07 |
| 10400 10410 | 32x12,5 | | |
| 10040 | 32x16 | | |
| 10050 | 40x12,5 | | |
| 10060 | 40x16 | | |
| 10500 | 50x20 | | |
| DISTRIBUTION CABLE TRUNKINGS | | TRUNKINGS | ACCESSORIES |
| 10080 | 110x34 | IK09 | IK08 |
| 10090 | 110x50 | | |
| 10180 | 90x50 | | |
| 10290 | 180x50 | | |

13 Series - TRUNKINGS FOR PROTECTION OF CABLES AND PIPES

| Ref. | OUTSIDE DIMENSIONS (mm) | PROTECTION AGAINST EXTERNAL MECHANICAL SHOCKS - IK | |
|-----------|-------------------------|--|--------------------|
| | | TRUNKINGS | ACCESSORIES |
| 13010 CBR | 25x30 | IK08 | IK07 |
| 13020 CBR | 40x40 | | |
| 13030 CBR | 60x40 | | |
| 13040 CBR | 60x60 | | |
| 13050 CBR | 80x40 | | |
| 13060 CBR | 80x60 | | |
| 13070 CBR | 100x40 | | |
| 13080 CBR | 100x60 | | |